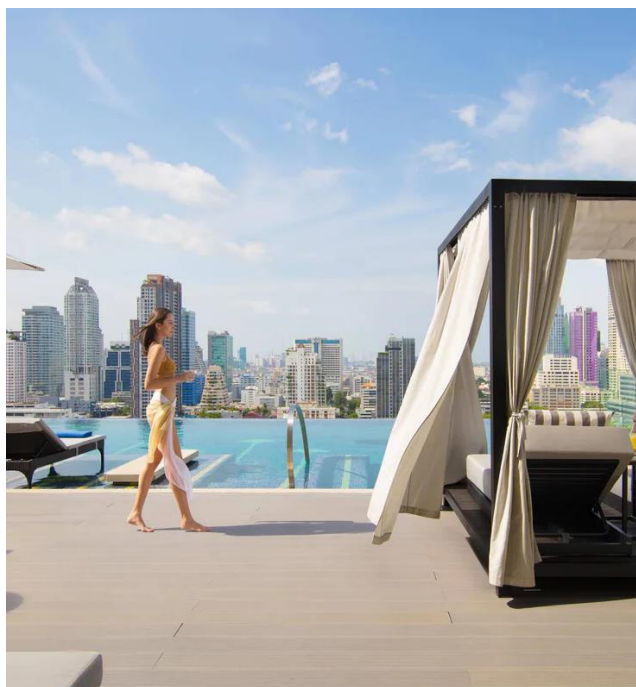


MEMBERSHIP CARD BENEFITS - TIER 2

THB 5,700 YEARLY PACKAGE

PARTICIPATING HOTEL LIST IN THAILAND



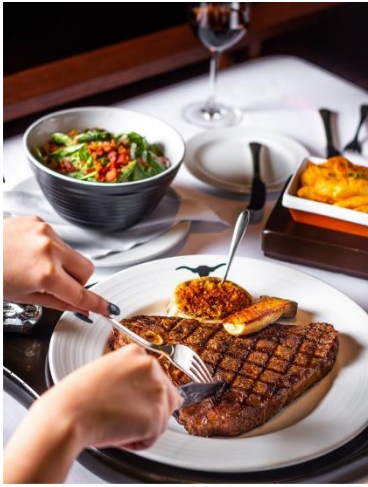
BANGKOK HOTEL (30% OFF F&B)

1. Aloft Bangkok Sukhumvit 11
2. Courtyard Bangkok Suvarnabhumi Airport
3. Courtyard by Marriott Bangkok
4. Courtyard by Marriott Bangkok Sukhumvit 20
5. Four Points by Sheraton Bangkok, Sukhumvit 15
6. JW Marriott Hotel Bangkok
7. Le Meridien Bangkok
8. Le Meridien Suvarnabhumi, Bangkok Golf Resort & Spa
9. Bangkok Marriott Marquis Queen's Park
10. Bangkok Marriott Hotel Sukhumvit
11. Bangkok Marriott Hotel The Surawongse
12. Marriott Executive Apartments Bangkok, Sathorn Vista
13. Marriott Executive Apartments Bangkok, Sukhumvit Park
14. Marriott Executive Apartments Bangkok, Sukhumvit Thonglor
15. Moxy Bangkok Ratchaprasong
16. Renaissance Bangkok Ratchaprasong Hotel
17. Royal Orchid Sheraton Hotel & Towers
18. The Athenee Hotel, A Luxury Collection Hotel, Bangkok
19. The Westin Grande Sukhumvit, Bangkok
20. W Bangkok

HOTEL OUTSIDE BANGKOK (20% OFF F&B)

21. Chiang Mai Marriott Hotel
22. Courtyard by Marriott North Pattaya
23. Courtyard by Marriott Phuket Town
24. Four Points by Sheraton Phuket Patong Beach Resort
25. JW Marriott Khao Lak Resort & Spa
26. JW Marriott Phuket Resort & Spa
27. Le Meridien Chiang Rai
28. Le Meridien Phuket Beach Resort
29. Le Meridien Phuket Mai Khao Beach Resort
30. Le Méridien Khao Lak Resort & Spa
31. Hua Hin Marriott Resort & Spa
32. Rayong Marriott Resort & Spa
33. Phuket Marriott Resort & Spa, Merlin Beach
34. Phuket Marriott Resort & Spa, Nai Yang Beach
35. The Naka Island, A Luxury Collection Resort & Spa Phuket
36. Renaissance Pattaya Resort & Spa
37. Renaissance Phuket Resort & Spa
38. Renaissance Koh Samui Resort & Spa
39. Sheraton Hua Hin Resort & Spa
40. Sheraton Hua Hin Pranburi Villas
41. Sheraton Samui Resort
42. Vana Belle, A Luxury Collection Resort
43. The Westin Siray Bay Resort & Spa, Phuket
44. W Koh Samui





CARD BENEFITS (applicable for main and supplementary cards)

30% OFF FOOD AND BEVERAGE VALID AT ALL PARTICIPATING HOTELS IN BANGKOK

- Only one card per table
- Maximum of 20 people
- Exclude dim sum all you can eat at Fei Ya - Renaissance Bangkok Ratchaprasong Hotel and Silk Road - The Athenee Hotel, A Luxury Collection Hotel
- 20% off Food and Beverage Kintsugi Bangkok by Jeff Ramsey - The Athenee Hotel, a Luxury Collection Hotel
- 30% off Omakase at Kissuisen - Bangkok Marriott Hotel The Surawongse
- 20% off Food and Beverage at St. Regis Bangkok (Excluding Zuma, Sushi KiShin & IGNIV Bangkok)
- Not valid at Madi Paidi Bangkok, Autograph Collection
- Not valid for beverage packages at all participating hotels in Thailand

20% OFF ON FOOD & BEVERAGES VALID AT ALL PARTICIPATING HOTELS OUTSIDE BANGKOK

- Maximum of 10 people

CORKAGE CHARGE

- 50% off at participating hotels in Bangkok only. (Excluding bar and Madi Paidi Bangkok, Autograph Collection)

PASTRIES/BAKERY

- 20% off on hotel produced products (cakes, pastry, breads etc.) valid at all participating hotels in Bangkok. (Not valid in conjunction with "Happy Hour")

FESTIVE PERIOD/SPECIAL EVENTS

- Minimum 10% off on food & non-alcoholic beverages at participating hotels in Thailand (Special Events are: Christmas Eve and Day, New Year's Eve and Day, Valentine's Day, Chinese New Year, Mother's Day, Father's Day, Loy Krathong, Easter Day, Thanksgiving etc.)
- Exclude special menu promotions at all participating hotels in Thailand

APAC ACCOMODATION BENEFITS

- Up to 20% off Best Available Rate (BAR). Valid at all participating hotels in Asia-Pacific. (Subject to availability and advance reservation. Maximum 3 rooms per booking. The discount is applicable for 1st room category only).

APAC DINING BENEFITS

- Up to 20% off food and beverage bill for a maximum of 10 people when dining at the food and beverage outlets of any other participating Marriott International hotels outside of Thailand and in Asia Pacific.
- 15% off food and beverage bills up to 10 persons at JW Marriott Hotel HongKong.
- 20% off food and 15% off beverage for up to 10 persons at the participating hotels in Japan.

LAUNDRY

- 20% off Laundry & Dry Cleaning, discount applies at laundry shop only at participating hotels in Bangkok. (Excluding The Athenee Hotel, a Luxury Collection Hotel, Bangkok)

SPA & FITNESS

- 20% off Spa treatments at participating hotels in Thailand
- 10% off on Fitness/Health Club Memberships
- 25% off on Fitness/Health Club Memberships at JW Marriott Bangkok

CATERING/MEETING ROOMS

- 10% off on the regular catering menus for private parties and the regular meeting packages for group meetings at participating hotels in Thailand (Excluding the Weddings and The Athenee Hotel, a Luxury Collection Hotel Bangkok Participation)

*** Please note all card benefits listed above are applicable for both Main and Supplementary card holders***



CERTIFICATES

ACCOMMODATION BENEFITS (Non-Transferable)

1 X One Night Complimentary Room Accommodation valid at below participating hotels in Thailand

1. Aloft Bangkok Sukhumvit 11
2. Bangkok Marriott Hotel Sukhumvit
3. Bangkok Marriott Marquis Queen's Park
4. Courtyard Bangkok Suvarnabhumi Airport
5. Courtyard by Marriott Bangkok Sukhumvit 20
6. Moxy Bangkok Ratchaprasong
7. The Westin Grande Sukhumvit, Bangkok
8. Chiang Mai Marriott Hotel
9. Courtyard by Marriott Phuket Town
10. Phuket Marriott Resort & Spa, Nai Yang Beach

- Advance reservation is required and subject to availability stating the intention to use this certificate. Please call the hotel directly to make your reservation.
- This certificate entitles the member to a one (1) night complimentary stay in a Standard room category (Single/Double Occupancy).
- Valid for Room Only (Breakfast not included). Applicable for 7 days per week. Subject to availability based on daily allotted rooms per hotel.
- This certificate is valid for one (1) use, one (1) room only with a maximum of two (2) persons in one room.
- This certificate is non-transferable and may be used by the main member card holder only.
- Members are not eligible to earn Marriott Bonvoy points and elite room nights. Marriott Bonvoy benefits do not apply and cannot be used in conjunction with the complimentary room night voucher.
- Any member who does not show up for a booking may be charged a nominal cancellation fee as determined by the hotel. The hotel also reserves the right to cancel the certificate in case of no show.
- May not be valid during periods of expected high hotel occupancy, long weekend holidays. Blackout dates apply including New Year's Eve, New Year's Day, Valentine's Day, Chinese New Year, Easter Day, Songkran Days, Mother's Day, Halloween Day, Father's Day, Thanksgiving, Loy Krathong, Christmas Eve, Christmas Day and other public holidays.
- Not valid in conjunction with any other special programmes, vouchers, or other special offers.

GROUP DINING BENEFITS IN BANGKOK (Fully-transferable)

4 X 50% off on food for 2 to 12 persons valid for lunch, dinner or Sunday Brunch at participating hotels in Bangkok

- 24 Hours advance reservation is required and subject to availability stating the intention to use this certificate. Please call the hotel directly to make your reservation.
- Valid for 50% off total food bill for 2-12 persons (food only) when dining on the same table at the same time for lunch, dinner or Sunday Brunch at any participating hotels in Bangkok and at Courtyard by Marriott Phuket Town. **Excluding Madi Paidi Bangkok, Autograph Collection Hotel, Moxy Bangkok Ratchaprasong, Private Dining Room Sheng (at Yao) Bangkok Marriott Hotel The Surawongse or any outsourced restaurants/bars. Not valid for 'Lunch Break' at the Kitchen Table – W Bangkok.**
- Valid for 2 – 10 persons, at Rain Tree Café, The Silk Road, Kintsugi Bangkok by Jeff Ramsey, The Allium Bangkok, The House of Smooth Curry – The Athenee Hotel, a Luxury Collection Hotel, Bangkok. At The Silk Road, valid for Monday-Friday only.
- Valid for 2 – 6 persons, Sunday to Thursday at Akira Back – Bangkok Marriott Marquis Queen's Park.
- Valid at Sirimahannop and The Crystal Grill House at Asiatique The Riverfront from Monday to Thursday.
- Not valid for set menus and all-you-can-eat (unlimited a la carte) menu at Kisso – The Westin Grande Sukhumvit, Bangkok. Valid for A la Carte menu only.
- Not valid for Omakase at Kissuisen - Bangkok Marriott Hotel The Surawongse
- Club Marriott™ card dining discounts will only apply when more than 12 persons are dining for food only (exclude all beverages). Cannot be used in conjunction with other Club Marriott™ certificates, other promotion vouchers, special offers, all-you-can-eat/ unlimited menus, special menus and set menu promotions.
- This certificate is fully transferable. Not applicable during blackout dates and all special promotions & events. Blackout dates apply including New Year's Eve, New Year's Day, Valentine's Day, Chinese New Year, Easter Day, Songkran Days, Mother's Day, Halloween Day, Father's Day, Thanksgiving, Loy Krathong, Christmas Eve, Christmas Day and other public holidays.
- Applicable service charge and government taxes are not included in the discount calculation. Children's menu items and buffet prices are not included.

GROUP DINING BENEFITS OUTSIDE BANGKOK (Fully-transferable)

1 X 50% off on food for 2 to 6 persons valid for lunch, dinner or Sunday Brunch at Courtyard by Marriott North Pattaya, Courtyard by Marriott Phuket Town, Sheraton Hua Hin Pranburi Villas, Sheraton Hua Hin Resort & Spa, Sheraton Samui Resort, and Vana Belle, a Luxury Collection Resort, Koh Samui

- 24 Hours advance reservation is required and subject to availability stating the intention to use this certificate. Please call the hotel directly to make your reservation.
- Valid for 50% off total food bill for 2-6 persons (food only) when dining on the same table at the same time for lunch, dinner or Sunday Brunch at **Courtyard by Marriott North Pattaya, Courtyard by Marriott Phuket Town, Sheraton Hua Hin Pranburi Villas, Sheraton Hua Hin Resort & Spa, Sheraton Samui Resort, and Vana Belle, a Luxury Collection Resort, Koh Samui.**
- Club Marriott™ card dining discounts will only apply when more than 6 persons are dining for food only (exclude all beverages). Cannot be used in conjunction with other Club Marriott™ certificates, other promotion vouchers, special offers, all-you-can-eat/ unlimited menus, special menus and set menu promotions.
- This certificate is fully transferable. Not applicable during blackout dates and all special promotions & events. Blackout dates apply including New Year's Eve, New Year's Day, Valentine's Day, Chinese New Year, Easter Day, Songkran Days, Mother's Day, Halloween Day, Father's Day, Thanksgiving, Loy Krathong, Christmas Eve, Christmas Day and other public holidays.
- Applicable service charge and government taxes are not included in the discount calculation. Children's menu items and buffet prices are not included.

FITNESS BENEFITS (Fully-transferable)

1 x Complimentary fitness day pass for two (2) adults and two (2) children (Fully-transferable)

- Valid at JW Marriott Hotel Bangkok, Bangkok Marriott Marquis Queen's Park, Renaissance Bangkok Ratchaprasong Hotel, Bangkok Marriott Hotel Sukhumvit, Bangkok Marriott Hotel The Surawongse (Valid weekday only and Excluding swimming pool and children at Bangkok Marriott Hotel The Surawongse), The Westin Grande Sukhumvit Hotel, The Royal Orchid Sheraton Hotel & Towers, The Athenee Hotel, a Luxury Collection Hotel, Bangkok (Excluding Fitness at The Athenee Hotel, a Luxury Collection Hotel, Bangkok), Le Meridien Bangkok, Le Meridien Suvarnabhumi, Bangkok Golf Resort & Spa, Courtyard Bangkok Suvarnabhumi Airport and W Bangkok Hotel (Excluding swimming pool and children at W Bangkok).

ANNUAL MEMBERSHIP FEE - THB 5,700.00 (Including tax and one supplementary card)

***These conditions of use and list of participating hotels may be subject to change without prior notice. Voucher has no cash value and cannot be resold. ***

CLUB MARRIOTT™

TERMS AND CONDITIONS OF MEMBERSHIP

DINING BENEFITS

1. Only one membership card may be used per table per dining visit.
2. On presentation of the valid Club Marriott™ membership card, the member is entitled 30% off food and beverage bills for up to 20 persons when dining at any of the participating Marriott International Hotels in Bangkok (excluding Madi Paidi Bangkok, Autograph Collection). Exclude restaurants/bars that are outsourced.
3. The dining benefit is not valid for Dim-Sum all you can eat menu at Fei Ya at Renaissance Bangkok Ratchaprasong Hotel and Silk Road - The Athenee Hotel, A Luxury Collection Hotel.
4. 20% off Food and Beverage at Kintsugi by Jeff Ramsey at The Athenee Hotel, a Luxury Collection Hotel, Bangkok
5. 20% off Omakase at Kissuisen - Bangkok Marriott Hotel The Surawongse
6. Members enjoy 20% off food and beverage at participating restaurants at The St. Regis Bangkok (excluding Zuma, Sushi KiShin and IGNIV Bangkok).
7. Unless otherwise stated, members will enjoy 20% off food and beverage bills for up to 10 persons when dining at any other participating Marriott International Hotels outside Bangkok and in Asia Pacific.

8. Members enjoy 20% off food and 15% off beverage for up to 10 persons when dining at participating hotels in Japan.
9. Members enjoy 15% off food and beverage for up to 10 persons when dining at JW Marriott Hotel Hong Kong.
10. The dining benefit is valid for the total food and beverage bill while not valid for gratuities, taxation, and service charge or tobacco products.
11. The dining benefit may not be available during special hotel promotions, events or holidays such as Christmas Eve, Christmas Day, New Year's Eve, New Year's Day, Valentine's Day, Chinese New Year, Mother's Day, Father's Day, Thanksgiving, Loy Krathong, Easter Day, and etc., dining on these days should check with the hotel when making reservations what member benefits apply.
12. The dining benefit is not available for room service, banquets, events held in function rooms or hotel's special promotions.
13. The dining benefits may not be available for designated restaurants, brunches or selected/themed menus unless hotel management decides otherwise. Members should check when making reservations whether dining benefits apply on such restaurants, dates or menus. Reservations are essential.
14. Dining discounts may not be available on special set menus that are already discounted.
15. Members enjoy 50% off corkage charge at participating hotels in Bangkok only.
16. Members enjoy 20% off on hotel produced products (cakes, pastry, breads, and etc.) at participating hotels in Bangkok. Not valid in conjunction with "Happy Hour".
17. Members enjoy 10% off on food & non-alcoholic beverages on festive and special events including Christmas, New year, Valentine's, Chinese New Year, Mother's Day, Father's Day, Loy Krathong, and etc.

ACCOMODATION

1. Club Marriott™ Members are eligible to receive a 20% off the Best Available Rate on weekends (Friday & Saturday) at participating Marriott International Hotels (7 days a week in participating resorts) across the Asia Pacific region.
2. The discount is applicable for 1st room category only. Limited to a maximum of 3 rooms per booking per night; not valid for group bookings.
3. Advance room reservations are required. Reservations are to be made through the www.myclubmarriott.com or member may book with the hotels reservation department directly by stating the intention of booking Club Marriott™ rate.
4. A valid Club Marriott™ card must be presented upon check-in to qualify for the rate.
5. All accommodation benefits are subject to availability, not valid through periods of expected high occupancy. Black-out dates may apply. A minimum of three (3) days advance reservations is required.
6. Cannot be used in conjunction with Marriott Bonvoy earning point or nights. In conjunction with member benefits is subject to availability.

CLUB MARRIOTT™ TERMS AND CONDITIONS OF MEMBERSHIP

1. Members enjoy 20% off on spa-treatments on regular menu price, excluding retail at participating hotels in Thailand.
2. Members enjoy 10% off on new fitness/health club memberships at participating hotels in Thailand.
3. Members enjoy 20% off on laundry services, discount applies at laundry shop. Valid at participating hotels in Bangkok.
4. Members enjoy 10% off on the regular catering menus for private parties on the regular meeting packages for group meetings. Subject to space availability, advance reservations required stating an intention to use the benefit. Excluding Weddings.

CLUB MARRIOTT™ TERMS AND CONDITIONS OF MEMBERSHIP

1. Club Marriott™ membership card is Non-Transferable and valid until the expiry date which is printed on the membership card and any member bonus certificates. The expiration date cannot be extended under any circumstances.
2. Any request for cancellation of membership must be made within seven (7) working days from the date of purchase of the membership. In the event of cancellation, there will be no refund of the membership fee unless all cards and membership materials including all certificates and the original invoice have been returned to the issuing agent. The membership fee will not be refunded if any of the certificates has been used. A cancellation fee of THB 1,000 per card/membership will be applied.
3. Club Marriott™ membership card and certificates have no cash value and cannot be sold or transferred for cash. They must be presented upon payment to redeem benefits.
4. The membership benefits cannot be used in combination with any other discounted offers and are subject to any applicable terms and conditions.
5. Requests for using the benefits must be made in advance, stating the intention to use the relevant benefits.

All requests are subject to availability and other restrictions and blackout dates may apply.

6. The participating hotel and restaurant listings, membership benefits and any terms and conditions communicated in this or any other Club Marriott™ material may be subject to change without notice. Where possible, members will be kept updated on any such changes through the Club Marriott website: www.myclubmarriott.com.

7. Without prejudice to any other mode of proof, through payment for the Club Marriott™ membership the member accepts these terms and conditions, as amended from time to time, and agrees to be bound by them.

8. Marriott International reserves the right to cancel or suspend membership at any time if it is suspected that there is any breach of these terms and conditions or the membership is being abused or operated fraudulently. Breach of these terms and conditions, fraud or abuse concerning Club Marriott™ membership or usage of membership benefits is subject to the appropriate administrative and/or legal action by Marriott International.

9. The unauthorized reproduction, sale or resale of any portion of this Club Marriott™ membership package is illegal.

Copyright Club Marriott©. All rights reserved.

PRIVACY STATEMENT

Club Marriott™ is committed to respecting your privacy. Personal data that is collected on behalf of Club Marriott™ in the relation to your Club Marriott™ membership is used to enhance your membership and to update you on any special offers and promotions. If you would like to update your personal data or to opt-out from any direct marketing relating to

Club Marriott™, please contact Club Marriott™ Office at:

CLUB MARRIOTT™ THAILAND OFFICE

C/O Bangkok Marriott Marquis Queen's Park

199 Soi Sukhumvit 22, Klong Ton, Khlong Toei, Bangkok 10110, Thailand

Tel: 02 011 0091 Fax: 02 010 0092

Working Hours: Monday till Friday 9:00 AM till 6:00 PM

Saturday 10:00AM till 5:00PM

Email: thailand@myclubmarriott.com / www.myclubmarriott.com